

STIERWALT *cattle clinic*



April 20 - 22, 2012

Wayne Proffitt Agricultural Center, Franklin, NC

Registration Info

INDIVIDUAL FEE: \$250 (Deposit \$100)

- One place for a chute and calf
- Five Meals

FAMILY FEE: \$350 (Deposit \$150)

- Up to three immediate family members
- One place for a chute and calf to be shared by family
- Five meals per family member

OBSERVER FEE: \$50 (Deposit \$20)

- Observation of all sessions
- Five meals

Deposit due with registration
and is non-refundable

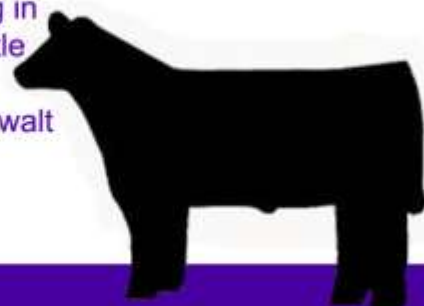
Clinic limited to 20 Chutes

For registration form, schedule, supply questions, motel information or general questions contact:

Pam Bell (828-421-2909)
pbell@southwesterncc.edu

"This clinic will provide a hands-on course with supervision at all times. You will learn proven techniques and tips on clipping, hoof trimming, show day dressing, showmanship, feeding and general care. I will share many of the solutions to problems I've encountered over the years. In addition to the hands-on experience, I like to get together each day for group discussions covering a variety of topics. In the 15 years running, I have continually updated and improved the clinics in order to bring you the best and most sought after clinic you can attend. This clinic will be an excellent crash course on everything in the show cattle industry.

- Kirk Stierwalt



Sponsored By: **JMS Cattlemen's Association**